

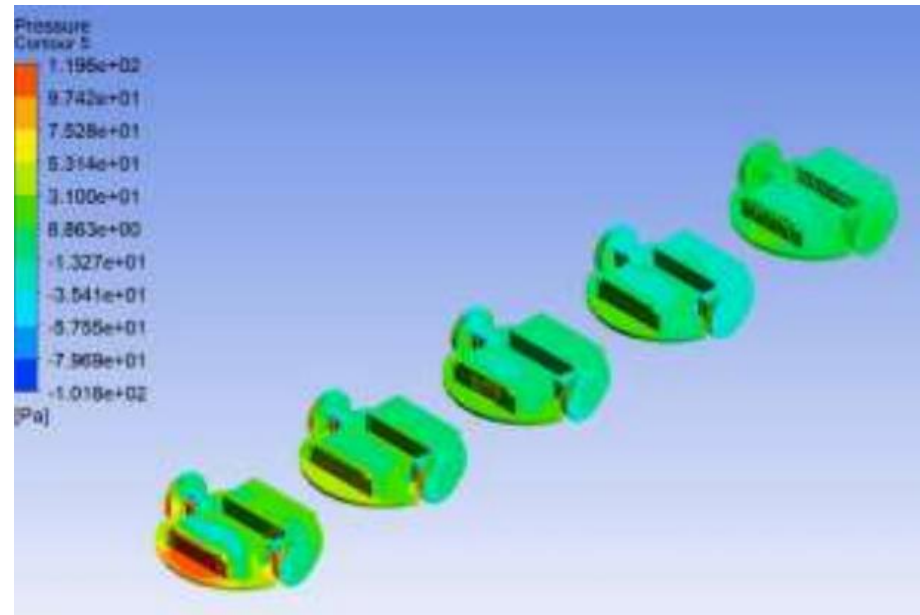
# Dynamic Peloton Formation Configuration Algorithm of Swarm Robots for Aerodynamic Effects Optimization

R. A. Bedruz<sup>1</sup>, J. M. Maningo<sup>1</sup>, A. Fernando<sup>1</sup>  
A. Bandala<sup>1</sup>, R. R. Vicerra<sup>1</sup> and E. Dadios<sup>1</sup>

<sup>1</sup>Gokongwei College of Engineering, De La Salle University, Philippines

- Lining formation of robots to decrease the experienced force on the agents at the back
- Important in swarm formation considerations
- Formulated Correction Factor:

$$CF_{draft} = 0.62 - 0.0104d_w + 0.0452d_w^2$$



Simulation of Aerodynamics Effects